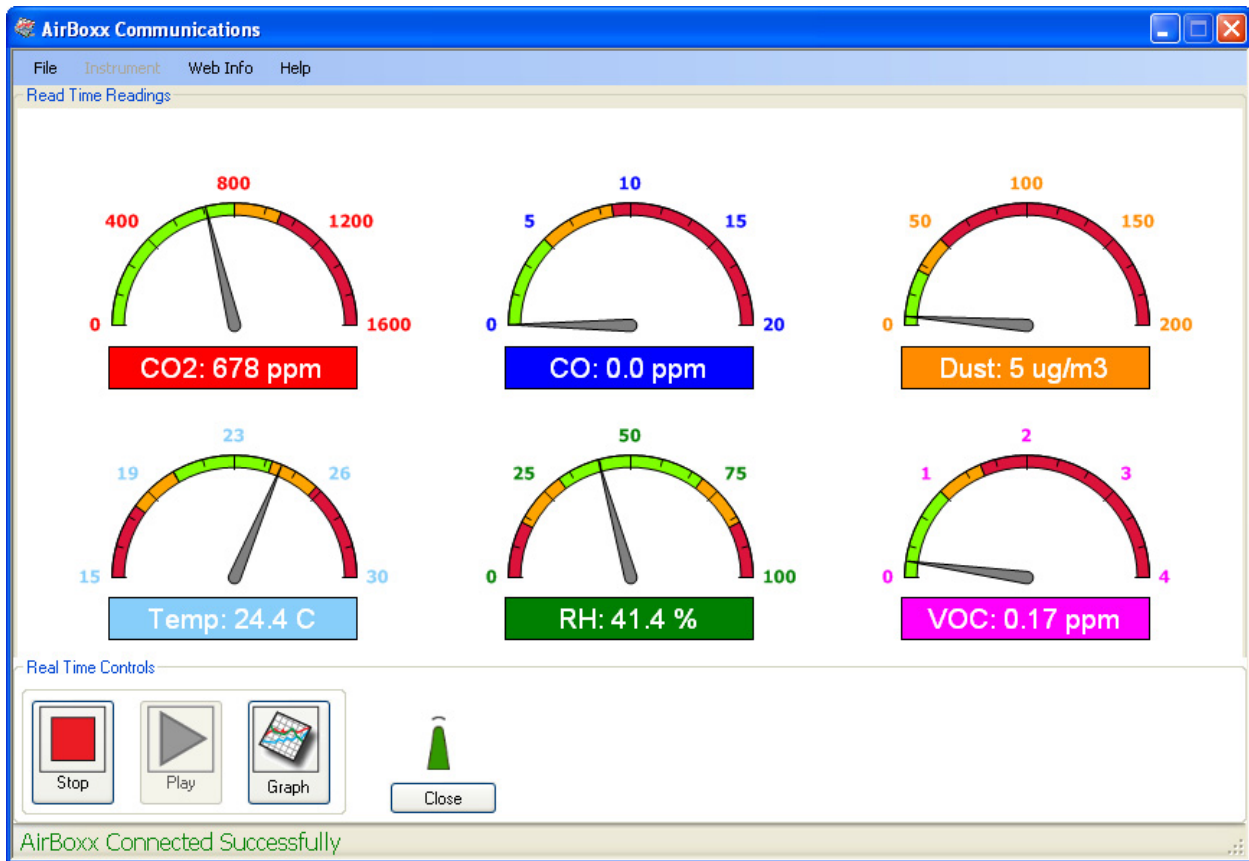


AirBoxx Connect Software User's Guide



K.D. Engineering

#166 - 1685 H Street
Blaine, WA, 98230

Keeping Current

The latest versions of this document and the KD Data Pro software are available for downloading free of charge on the Internet at www.teamkd.com. We recommend that you use Netscape Navigator 4.x or higher, or Microsoft Internet Explorer 4.x or higher to download these files.

K.D. Engineering can also send this document and/or the KD Data Pro at a nominal cost. For more information call K.D. Engineering at (800) 308-7717.

Table of Contents

Introduction	4
Installing the AIRBOXX CONNECT Software.....	5
System Requirements.....	5
Installation Instructions.....	5
Connecting a Monitor to the AIRBOXX CONNECT Software.....	6
Using the AIRBOXX CONNECT Software	7
Using the File Menu	8
Open.....	8
Close	8
Exit.....	8
Using the Instrument Menu	9
Setting Date and Time	9
Setting Recording Interval and TWA	9
Setting Alarm Intervals and Duration.....	10
Setting Temperature Preferences	11
Downloading the Monitor Data	11
Updating the Monitor Firmware	12
View Real-Time Readings from your Monitor.....	13
Using the Web Info Menu	14
Changing Login	14
Connecting to the AirBoxx/TeamKD Website	15
Upload a Data File	15
Using the Help Menu.....	15
Displaying Version Information	15

Introduction

This guide provides information to help you install and use *AirBoxx Connect* software.

The following sections are in this guide.

- *Installing the AirBoxx Connect Software.* This section contains information about installing the software.
- *Using the AirBoxx Connect Software.* This section contains instructions for using the software to display data.

For information about other products available or technical support, call K.D. Engineering toll-free at (800) 308-7717.

Installing the AIRBOXX CONNECT Software

This section contains system requirement information and instructions for installing the AIRBOXX CONNECT software.

System Requirements

The following system requirements are necessary to run the software.

Microprocessor	486 or higher
Available memory	At least 8 MB
Operating system	Microsoft Windows 95 or better

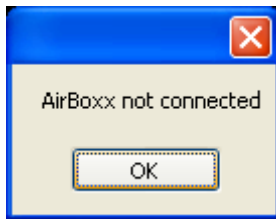
Installation Instructions

Use the following instructions to install the software.

1. Start Windows.
2. Insert included USB drive and run (double click) *AirBoxxSetup.msi*
 1. The *AirBoxx Connect* Set-up Wizard should launch:
 - a) Click 'Next'
 - b) Accept default or choose a file location using the 'Browse' button
 - c) Click "Next' twice, then 'Close'

Connecting a Monitor to the AIRBOXX CONNECT Software

You must have a monitor connected to your computer via USB in order to launch *AirBoxx Connect*. If you do not have a monitor cabled to your computer when you attempt to launch the *AirBoxx Connect* software you will receive the following dialog box:



Using the AIRBOXX CONNECT Software

This section contains information about the tasks you can perform using the *AirBoxx Connect* software. You can use the software to do the following.

Using the **File** menu:

- Open
- Close
- Exit

Using the **Instrument** menu:

- Set Date/Time
- Set Recording Interval & TWA
- Modify Alarm Settings
- Toggle between Fahrenheit and Celsius Temperature
- Download
- Update Firmware
- Get Real Time Readings

Using the **Web Info** menu:

- Change Login
- Connect to Corporate Website
- Upload Data File

Using the **Help** menu:

- About Information

Using the File Menu

Open

This feature is not yet implemented.

Close

This feature is not yet implemented.

Exit

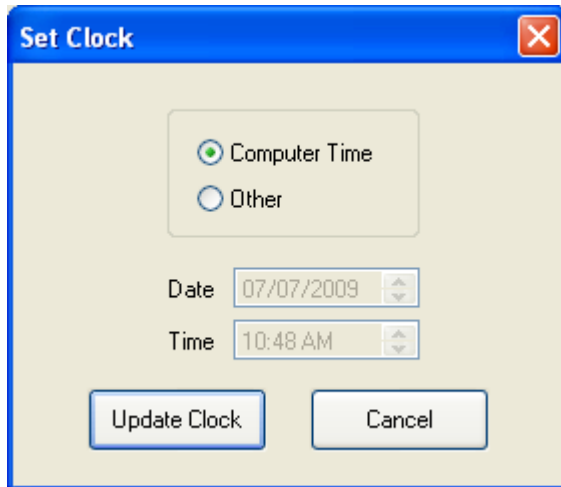
Use this menu item to close *AirBoxx Connect*.

Using the Instrument Menu

Setting Date and Time

In the *AirBoxx Connect* window, do the following to set the date and time on your monitor.

1. From the **Instrument** menu, select **Set Date/Time** to receive the following dialog box:

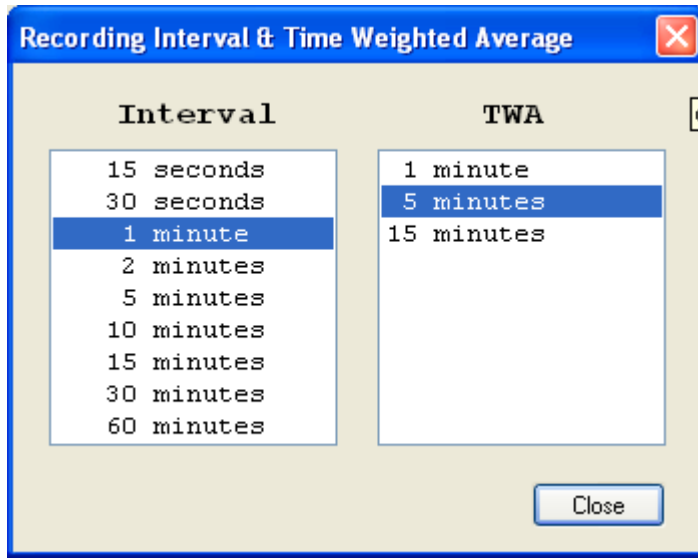


2. Select the **Computer Time** radio button to synchronize the monitor's time with your computer's time. Click **Update Clock** to change the time on the monitor.
3. Select the **Other** radio button to manually set the time on your monitor. Use the up and down arrows to adjust time and date. Click **Update Clock** to change the time on the monitor.

Setting Recording Interval and TWA

In the *AirBoxx Connect* window, do the following to set the recording interval or TWA (Time Weighted Average) on your monitor.

1. From the **Instrument** menu, select **Recording Interval & TWA** to receive the following dialog box:

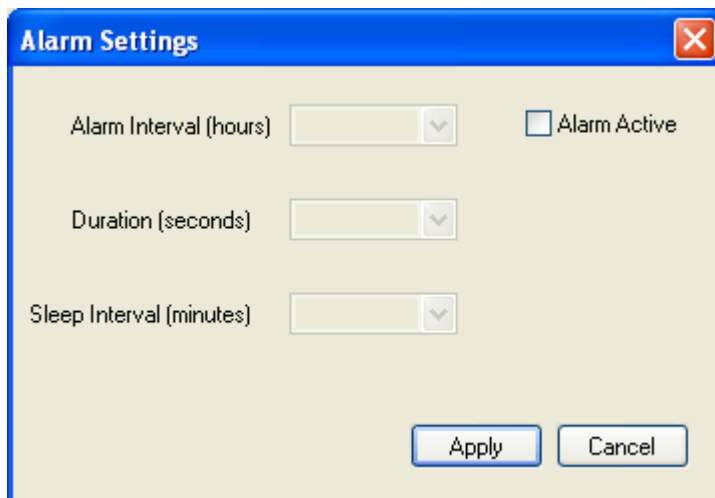


2. Select the desired recording interval or TWA.
3. Selected values are immediately transferred to the monitor.

Setting Alarm Intervals and Duration

In the *AirBoxx Connect* window, do the following to change alarm settings on your monitor.

1. From the **Instrument** menu, select **Alarm Settings** to receive the following dialog box:



2. Select the desired alarm interval, duration and sleep interval from the drop down menus available.
3. Use the **Alarm Active** check box to activate or disarm alarms.
4. Click **Apply** to save settings or **Cancel** to abort changes.

Setting Temperature Preferences

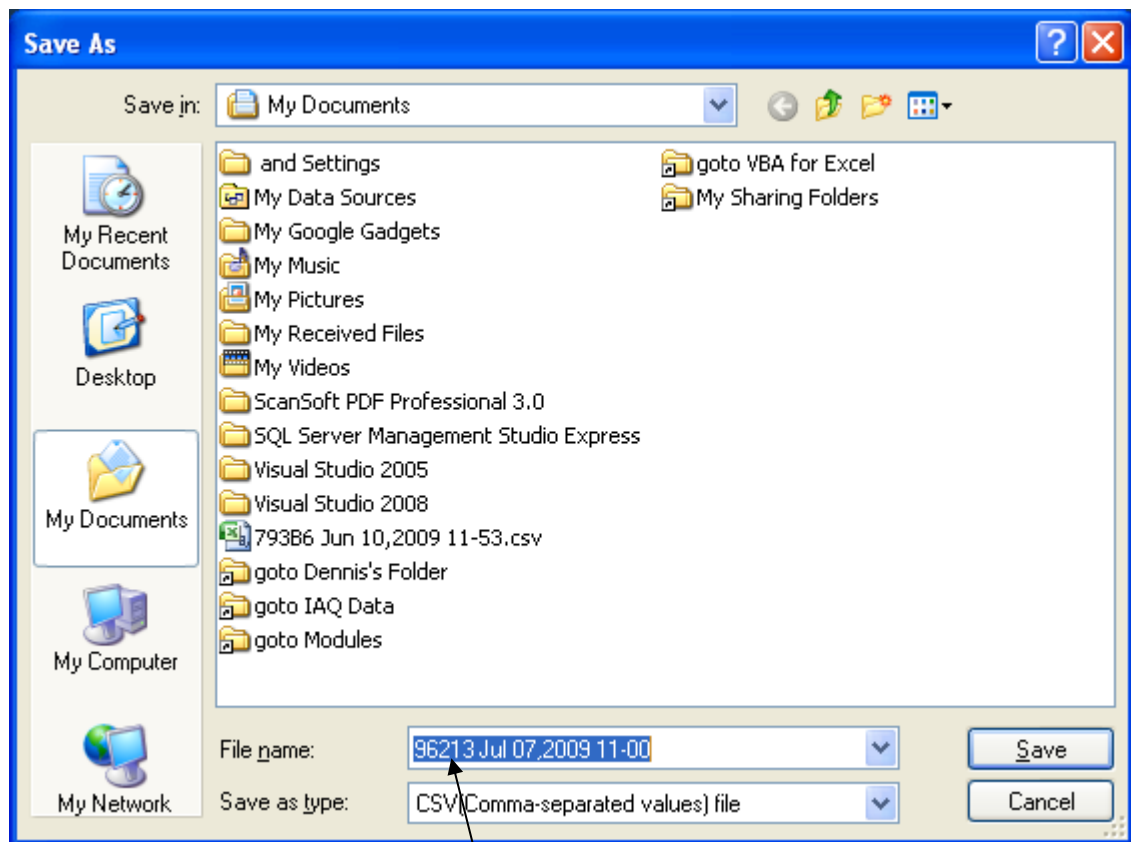
In the *AirBoxx Connect* window, do the following to select your temperature preference on your monitor.

1. From the **Instrument** menu, select **Temperature**, and then select **Change to Celsius** or **Change to Fahrenheit** from the fly out menu to change the monitor's temperature preference.

Downloading the Monitor Data

In the *AirBoxx Connect* window, do the following to download the data from your monitor.

1. From the **Instrument** menu, select **Download Only** to receive the following dialog box:



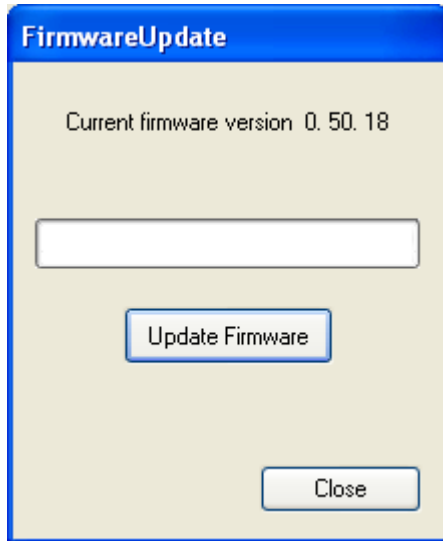
Unit's default file naming convention is Serial number, followed by date and time. You may overwrite this field to any name you like, subject to windows limitations

2. Select the destination folder using the **Save in** drop down box.
3. Name the file or leave the default name in the **File name** drop down box.
4. Select **Save** to save the file as a .csv (comma-separated value) file. Select **Cancel** to abort download.

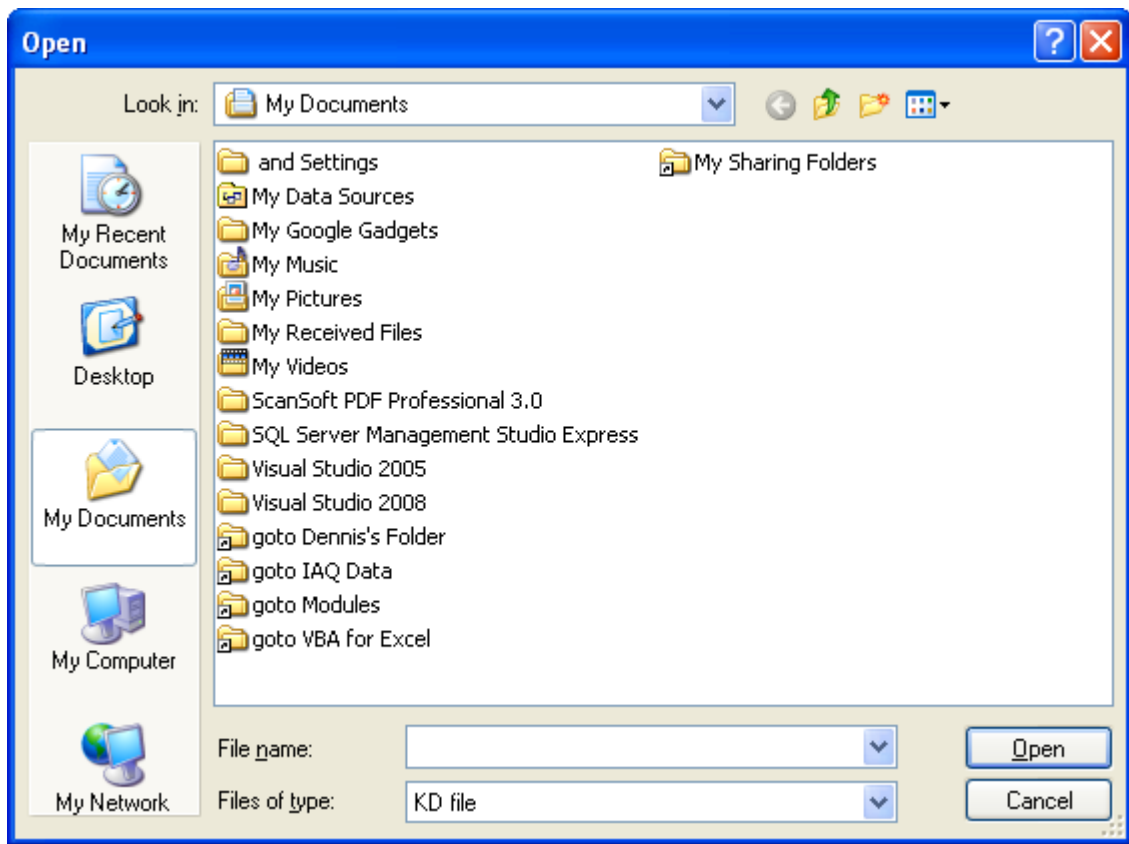
Updating the Monitor Firmware

In the *AirBoxx Connect* window, do the following to update your monitor firmware.

1. From the **Instrument** menu, select **Upgrade Firmware** to receive the following dialog box:



2. Click the Upgrade Firmware button to receive the following dialog box:



3. Navigate to the location of the new firmware, select and click **Open** to update firmware.

View Real-Time Readings from your Monitor

In the *AirBoxx Connect* window, do the following to view your monitor data as real-time readings.

1. From the **Instrument** menu, select **Upgrade Firmware** to receive the following dialog box:

The screenshot shows the 'AirBoxx Communications' window with the 'Read Time Readings' dialog box open. The dialog box contains six gauges displaying real-time data:

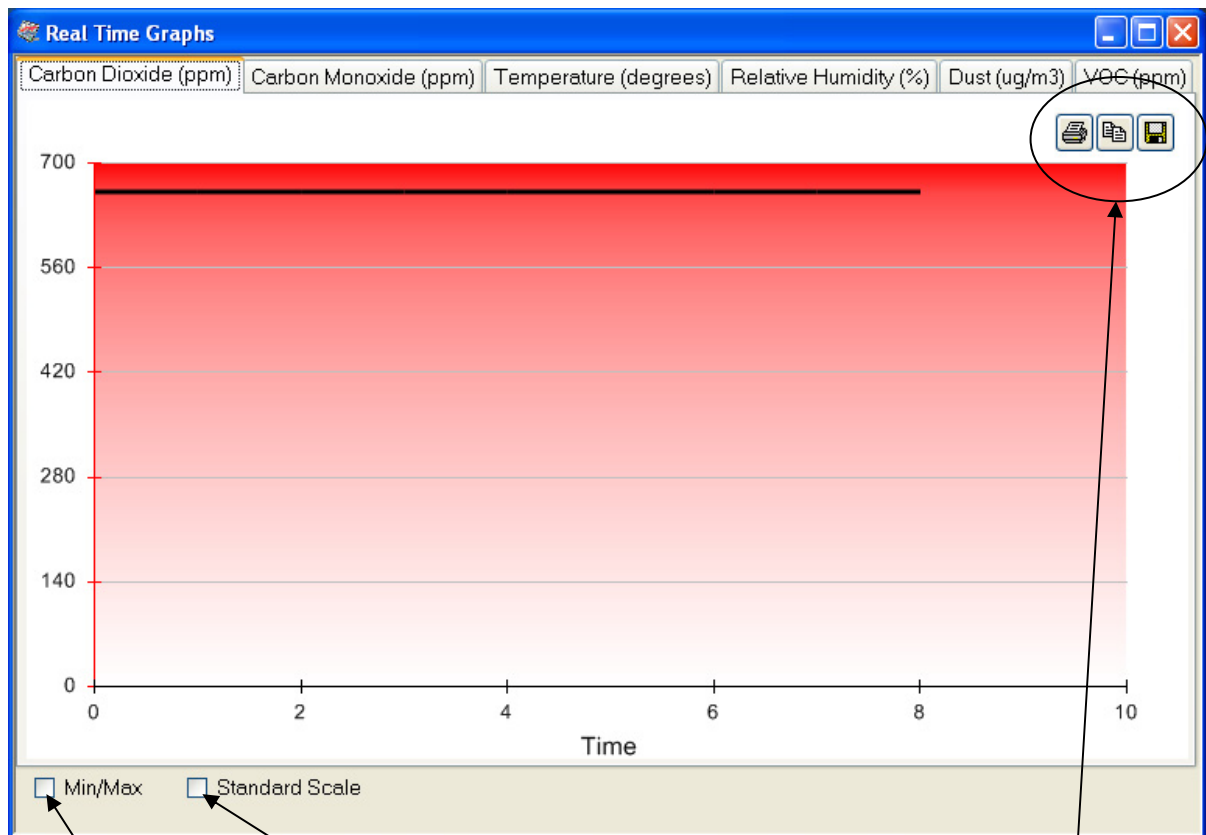
- CO₂: 678 ppm (Red gauge, scale 0-1600)
- CO: 0.0 ppm (Blue gauge, scale 0-20)
- Dust: 5 ug/m³ (Orange gauge, scale 0-200)
- Temp: 24.4 C (Light blue gauge, scale 15-30)
- RH: 41.4 % (Green gauge, scale 0-100)
- VOC: 0.17 ppm (Purple gauge, scale 0-4)

Below the gauges is the 'Real Time Controls' section, which includes buttons for 'Stop', 'Play', 'Graph', and 'Close'. A status bar at the bottom of the dialog box displays 'AirBoxx Connected Successfully'.

Annotations with arrows point to the 'Stop', 'Play', 'Graph', and 'Close' buttons, providing instructions:

- Click **Stop** or **Play** button to stop or start real time readings
- Click **Graph** button to activate graphing features
- Click **Close** button to close window and return to main menu

2. Click **Stop** or **Play** button to stop or start real-time readings.
3. Click **Graph** button to activate graphing features. This will open the following window:



Check or uncheck to display or hide minimum and maximum lines

Check or uncheck to toggle between Standard and Auto scale

Click on any of the upper tabs to see desired graph

- Click the appropriate button to:
- 1) Print active graph
 - 2) Copy graph to clipboard
 - 3) Copy graph to file

4. Click **Close** to close window and return to main menu.

Using the Web Info Menu

Changing Login

This feature is not yet implemented.

Connecting to the AirBoxx/TeamKD Website

1. From the **Web Info** menu, select **AirBoxx Family Website** to open the KD Engineering corporate website in a new window.

Upload a Data File

This feature is not yet implemented.

Using the Help Menu

Displaying Version Information

1. From the **Help** menu, select **About** to display the software version information.
2. Click **Close** to close the **About** dialog box.